

Installation Instructions for BioD-SuperLog™ Rectangular Coir Log

1. Clean and grade the base of the eroded streambank or shoreline. If necessary, strengthen the toe and the foundation (Figure 1). Place the BioD-SuperLog™ unit on a level surface (a slight incline as shown is recommended), keeping the end with the pouch towards the direction of extension of the BioD-SuperLog™. It can be installed to give two heights, 12" or 10" (See Figure 2). The preferred height is 12" (Figure 2a).
2. Pull the coir fiber plugs from both faces of the BioD-SuperLog™ exposing the invisible holes (Figures 3 & 4).
3. Drive anchor stakes through the holes in the top surface of the BioD-SuperLog™. It is recommended to use at least three anchor stakes (Figure 5 & 6).
4. Insert live plant cuttings through the exposed holes on the sides of the BioD-SuperLog™. If there are unused holes on the top surface, they too may be used to insert live plant cuttings (Figure 5 & 6).
5. Fill soil up to the top level of the BioD-SuperLog™ (Figure 7).
6. Insert coir plugs removed from the BioD-SuperLog™ vertically into the filled soil mass (Figures 7 & 8).
7. Keep extending installation using the netting pouch for connecting the BioD-SuperLog™.
8. If necessary, keep building layers of BioD-SuperLog™ and repeat the above described installation procedure. One may insert live plant cuttings in between layers (Figure 8).

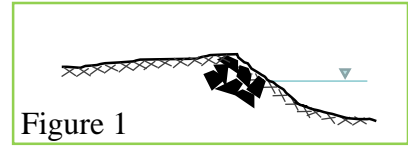


Figure 1

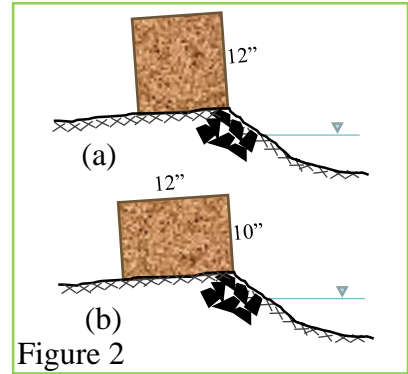


Figure 2

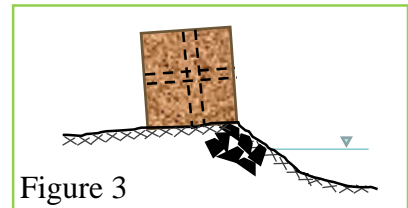


Figure 3

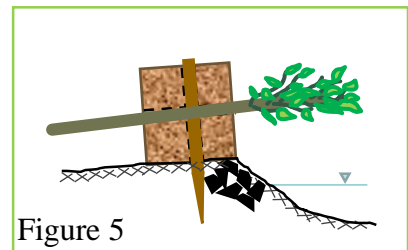


Figure 5

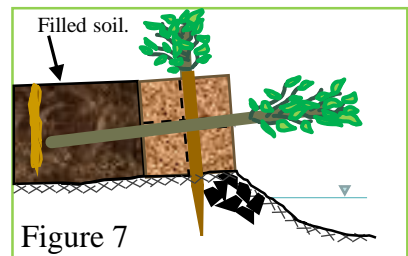


Figure 7

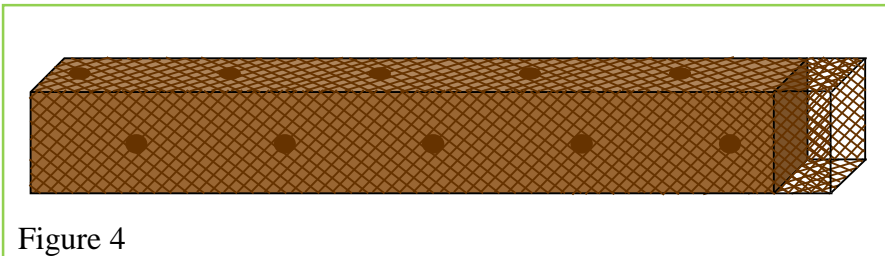


Figure 4

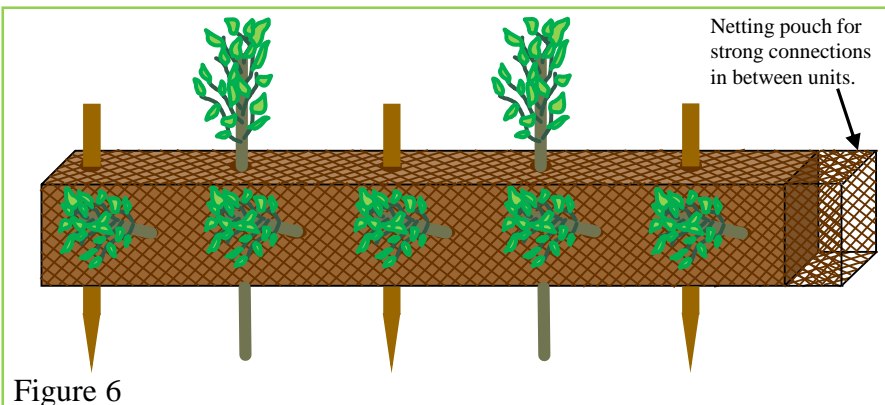


Figure 6

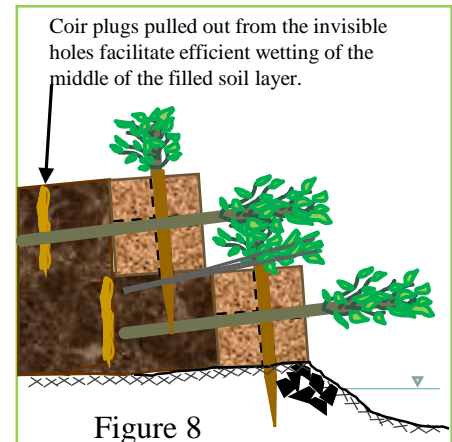


Figure 8